

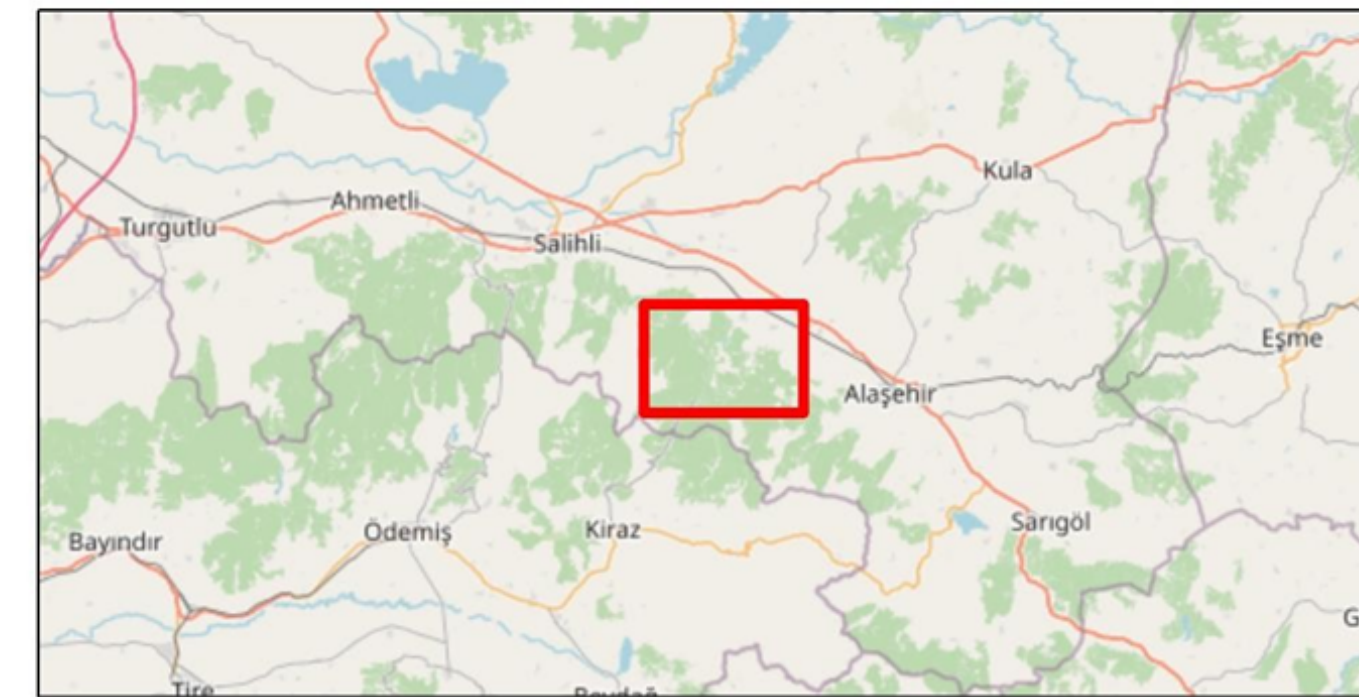
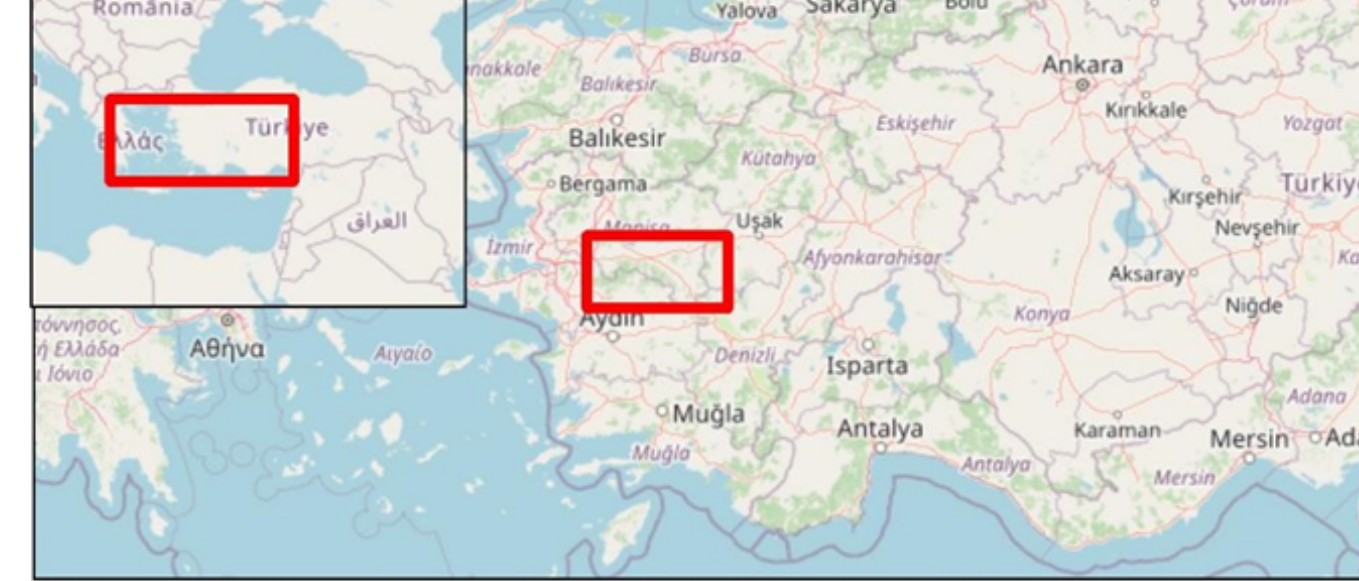


Alaşehir Polymetal Project (W Turkey)

LICENCE HOLDER: HALİL YAVUZ

SUMMARY

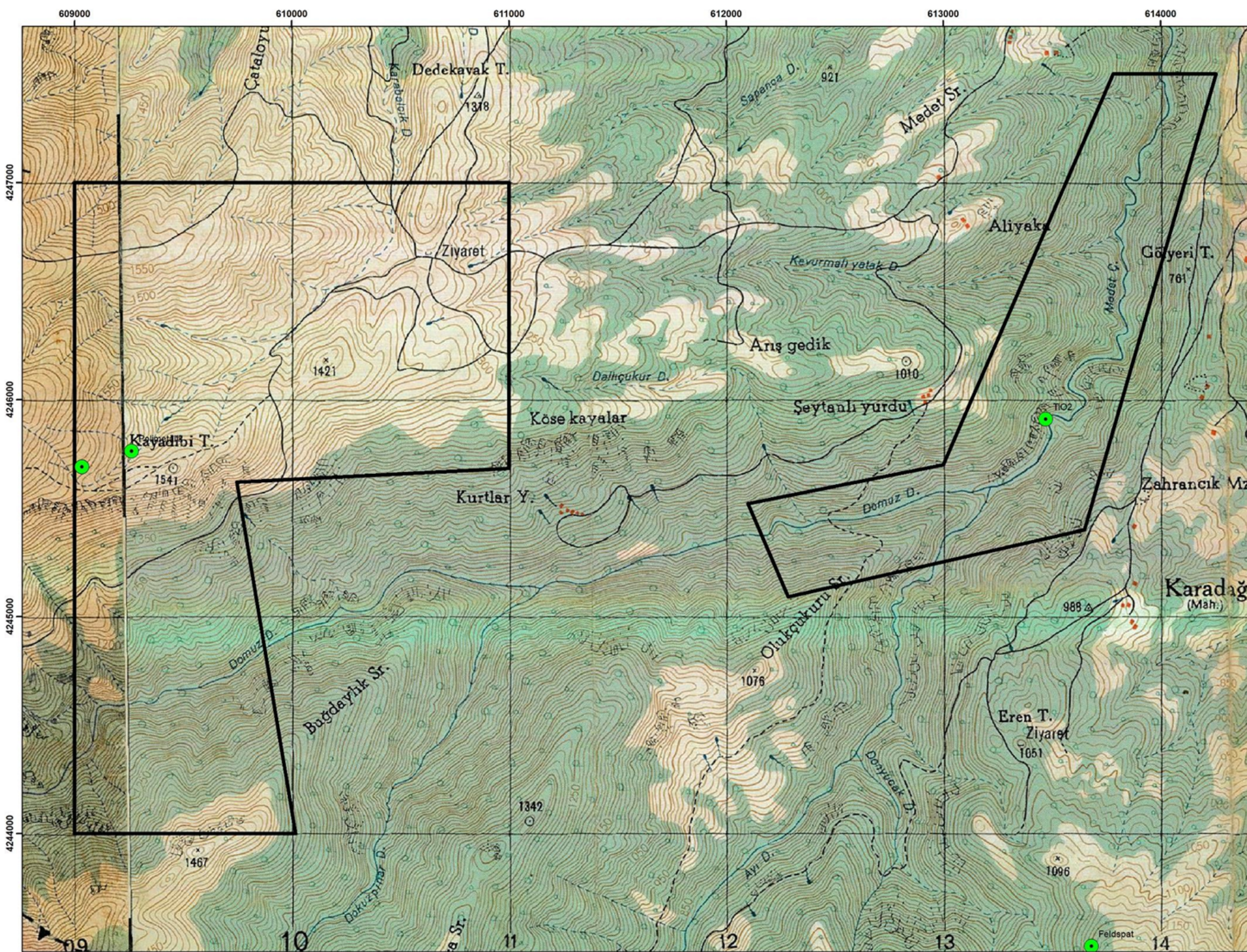
- 01 Project Location : Kayadibi Hill, Alaşehir, Manisa, W. Turkey
- 02 Licence : Full operational (until April 2030)
- 03 Licence holder : Halil Yavuz
- 04 Prospection Licence area : 586,43 Ha
- 05 Operation Licence area : 24,2 Ha
- 06 Geological frame : Granite intrusion to Pelitic Schists
- 07 Ores : Pb, Zn, Ag, Au, Pt, Pd
- 08 Exploration : Initial phase



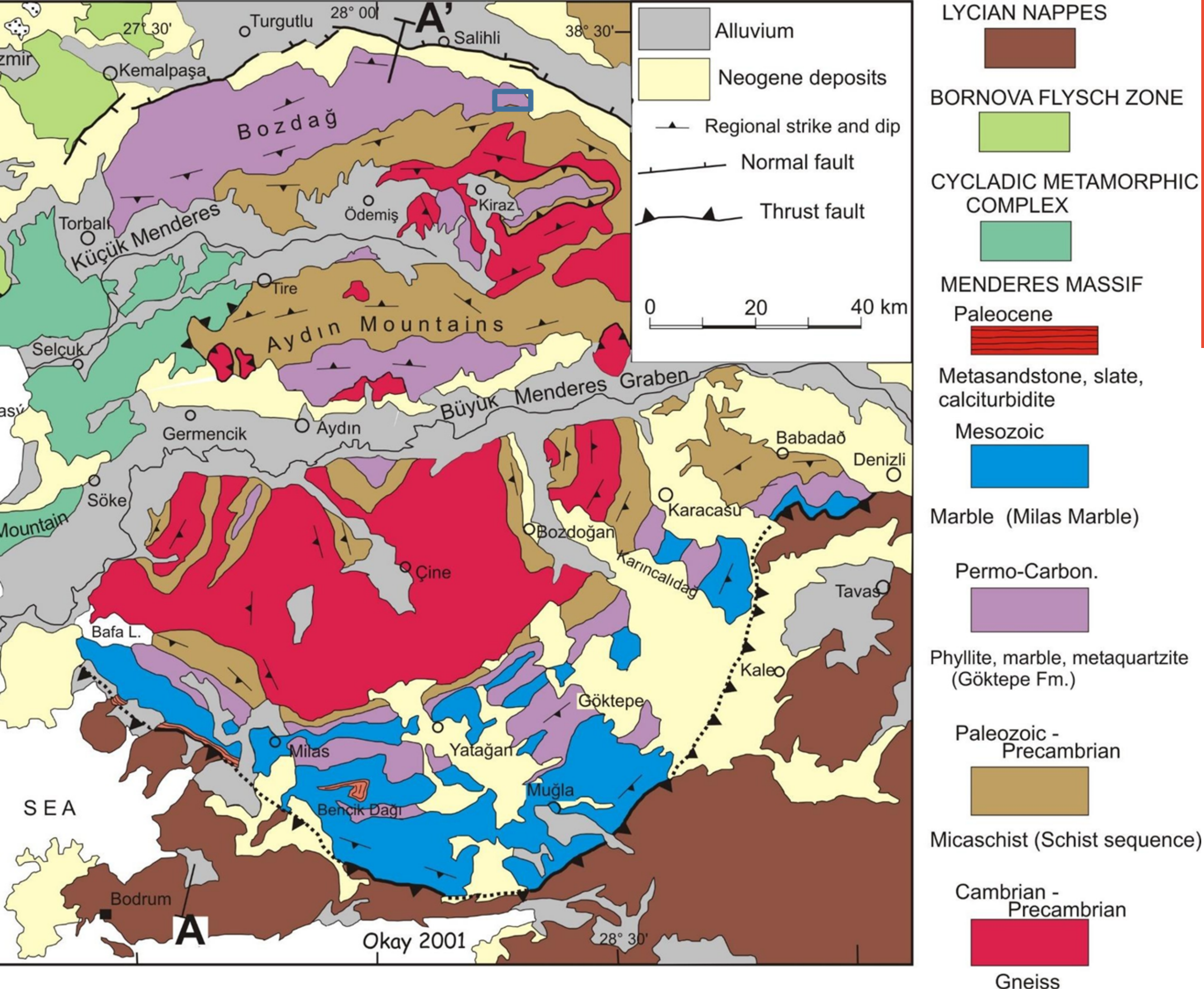
Locator Map

LICENCE AREA TOPOGRAPHY MAP

Two polygons



GEOLOGICAL SETTING

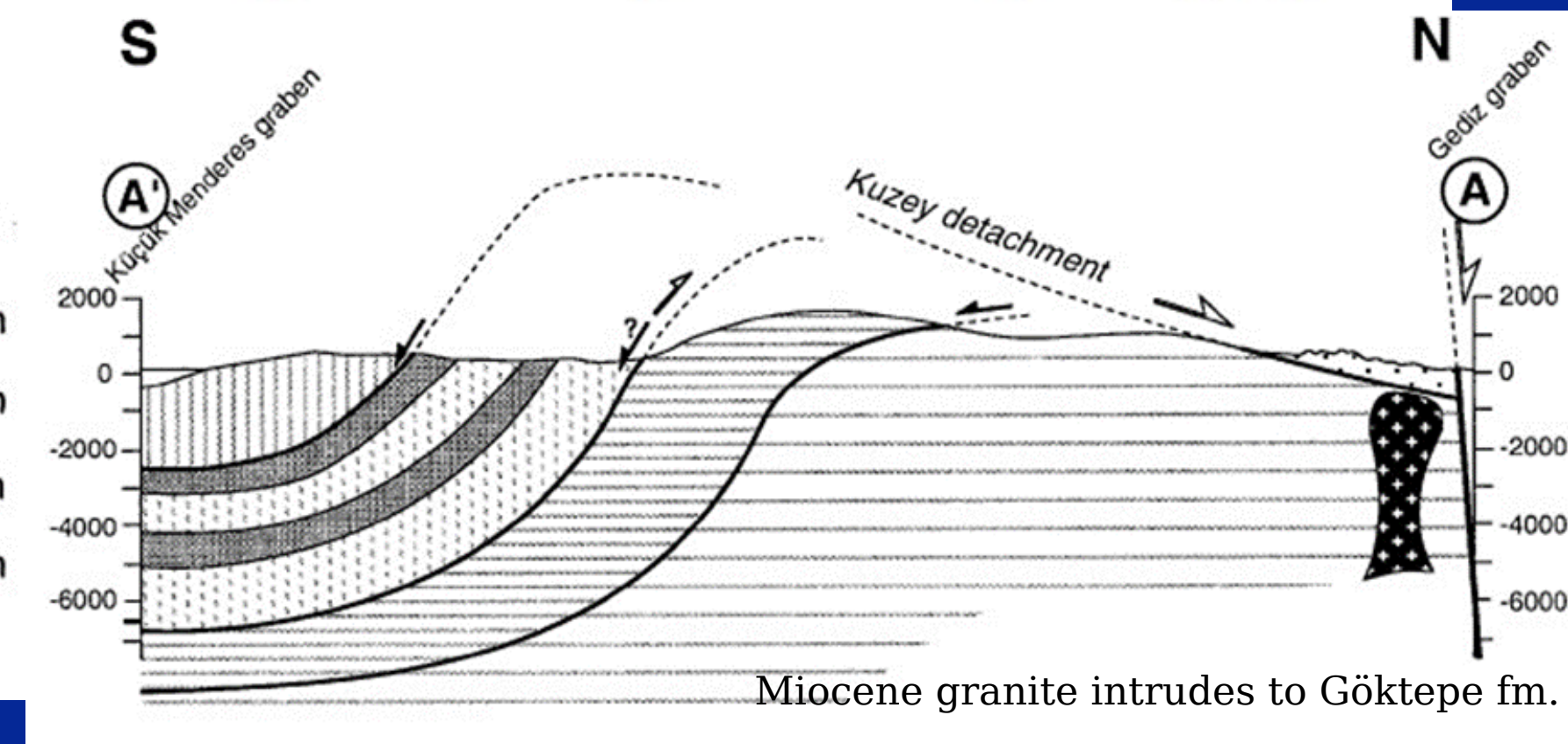
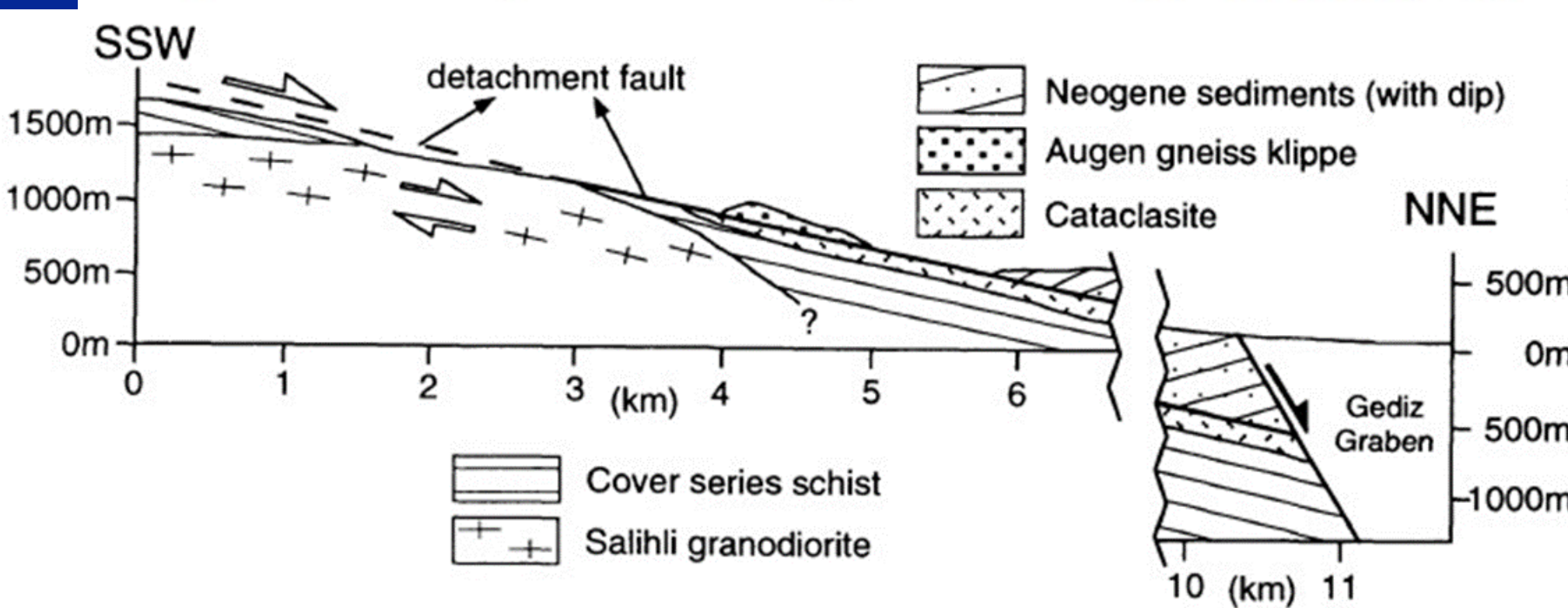
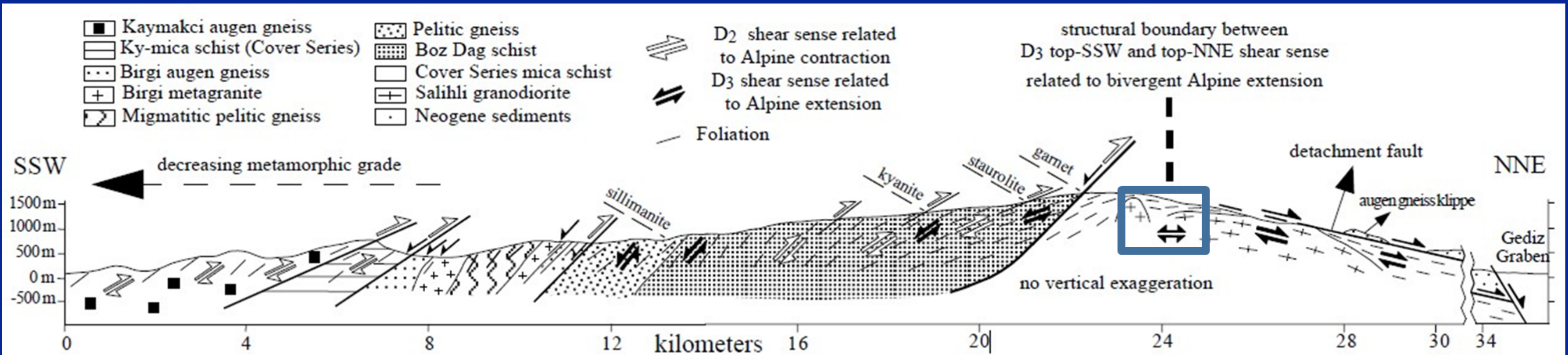


Licence area lies in the Menderes Massif Unit's cover series (Göktepe Fm)

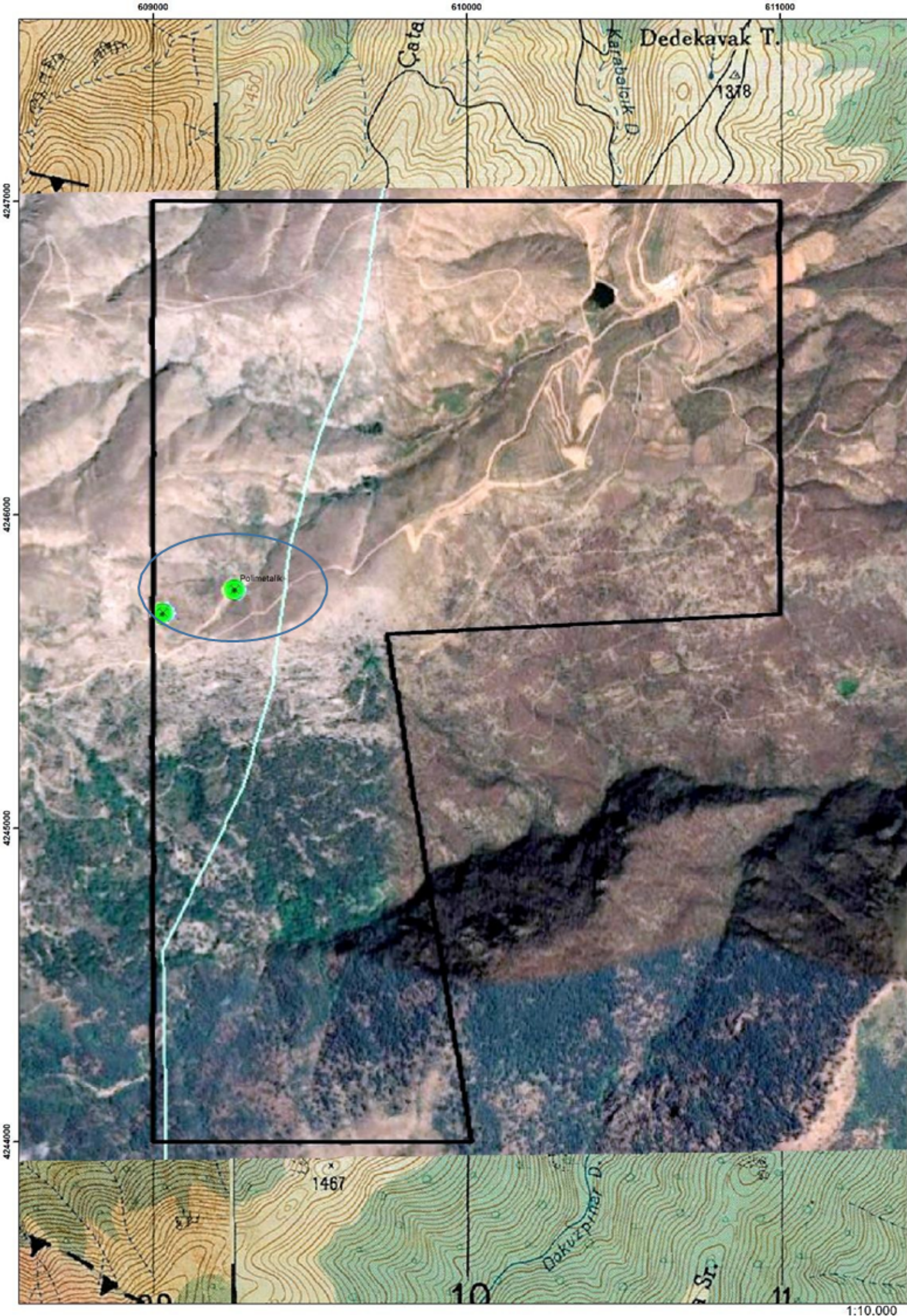
Okay, A. Stratigraphic and metamorphic inversions in the central Menderes Massif: a new structural model. *Int J Earth Sci* 89, 709-727 (2001).
<https://doi.org/10.1007/s005310000098>

Okay 2001

REGIONAL GEOLOGY



Hetzel, R., Romer, R. L., Candan, O., & Passchier, C. W. (1998). Geology of the Bozdag area, central Menderes massif, SW Turkey: Pan-African basement and Alpine deformation. *Geologische Rundschau*, 87(3), 394-406.



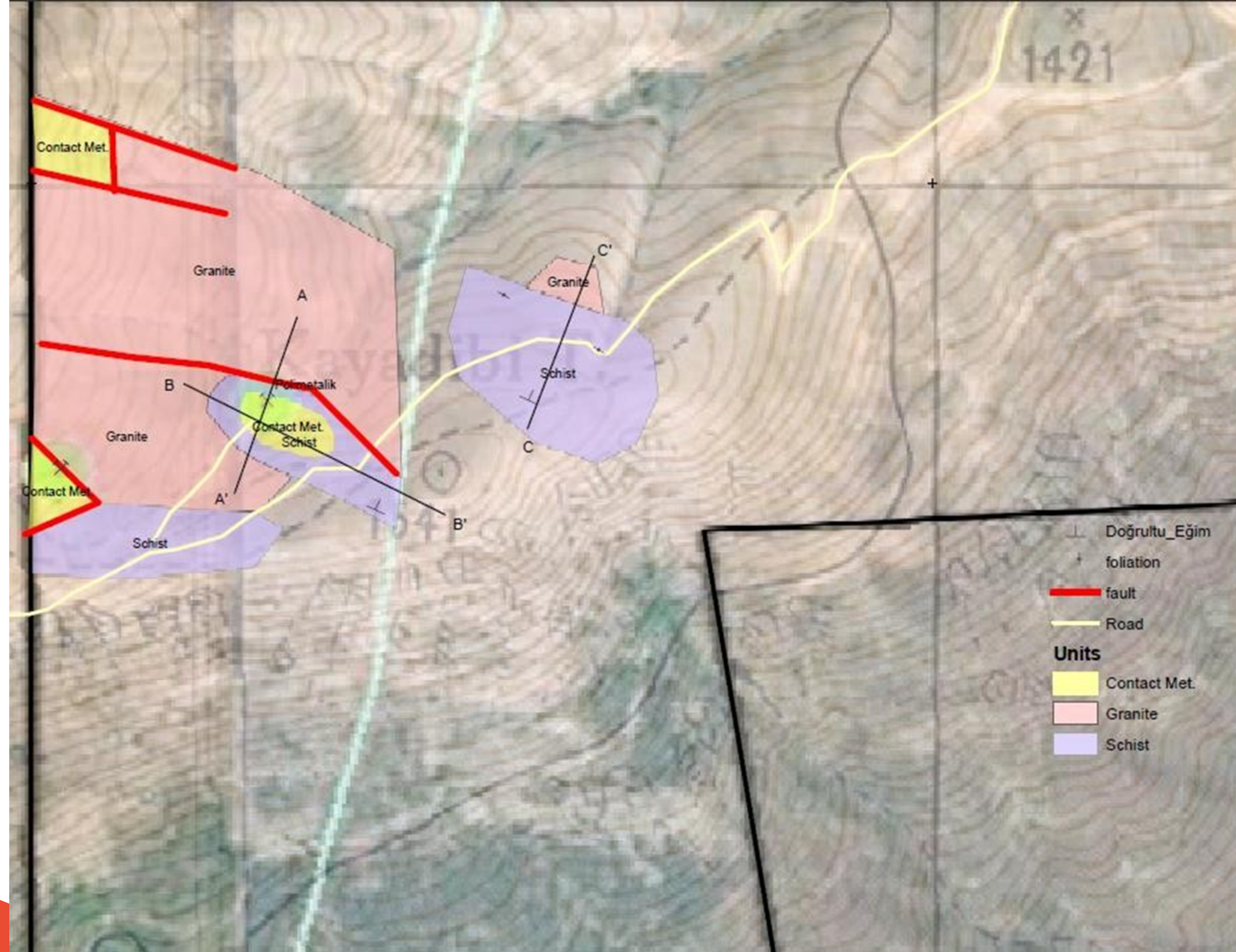
FIELD GEOLOGY

Field work region on the western polygon of the licence circled (see next slide)

FIELD GEOLOGY

Lead mineralization was observed in the contact metamorphism zone

Between the schist belonging to the Menders Massif and Miocene (?) nonfoliated granitic rocks.



OUTCROPS OF THE ORE



OUTCROP OF THE ORE



OUTCROP OF THE ORE



ELEMENTAL ANALYSIS OF THE ORE

Analyse	Wert	Einheit
Silber	219	g/t
Gold	1.4	g/t
Palladium	2.3	g/t
Platin	0.4	g/t
Indium	<0.01	%Gew.
Rhenium	20	g/t
Kohlenstoff	<0.3	%Gew.
Brom	<10	g/t
Chlor	<0.01	%Gew.
Fluor	0.02	%Gew.
Jod	<10	g/t
Brennwert	3100	kJ/kg
Cadmium	360	g/t
Molybdän	1	g/t
Selen	9	g/t
Tellur	2	g/t
Thorium	2	g/t
Uran	<1	g/t
Quecksilber	1	g/t
Nässe	0.15	%Gew.
Aluminiumoxid	5.1	%Gew.
Arsen	15.0	%Gew.
Wismut	<0.01	%Gew.
Calciumoxid	0.4	%Gew.
Kobalt	0.01	%Gew.
Kupfer	<0.1	%Gew.
Eisen	15.1	%Gew.
Kalium per Uniquant	2.0	%Gew.
Magnesiumoxid	1.3	%Gew.
Natrium per Uniquant	<0.01	%Gew.
Nickel	0.02	%Gew.
Blei	4.20	%Gew.
Schwefel	11.7	%Gew.
Antimon	0.05	%Gew.
Siliziumdioxid	40.5	%Gew.
Zinn	0.01	%Gew.

**For questions
Please mail to**



Mr. Muharrem Yavuz

muharrem.yavuz@zirvemaden.com.tr

www.zirvemaden.com.tr

